

**INS/OUTS**

2 HD/SD SDI In (1920,1280,525,625 auto sense)  
 4 HD/SD SDI Outs  
 4 GPI In and 2 GPI Outs potential free  
 1 RJ45 100base\_T Ethernet

**LEGALIZER**

100% removal of illegal colors (if longer than 4 pixels)  
 Y Black Clip -50/+50mV from nominal  
 Y Black Knee +100/-0mV from Black Clip  
 Y White Clip 760/650mV  
 Y White Knee -100/+0mV from White Clip  
 Cb/Cr Clip 150/50%  
 RGB Black Clip -50/+50mV from nominal  
 RGB Black Knee +100/-0mV from Black Clip  
 RGB White Clip 760/650mV  
 RGB White Knee -100/+0mV from White Clip

**CROPPING**

H Crop 0 to +half video line (linear edges)  
 V Crop 0 to +half video field

**DIGITAL PROC AMP (YUV 1D LUT)**

Y Lift -150/+150mV from nominal  
 Cb/Cr lift ±150mV from nominal  
 Y Gain +50% to +200%  
 Cb/Cr Gain +0% to +200%  
 Hue±180°

**COLOR CORRECTOR (RGB 1D LUT)**

RGB Black -700/+1440mV from nominal  
 RGB Peak level -700/+1440mV from nominal  
 RGB Gamma (1D LUT) with gamma between 0.3 to 2.8  
 RGB Bezier (1D LUT) for non linear transfer function

**3D LUT**

17 nodes per Color, 12 bit accuracy  
 Transfer from Compact Flash or Ethernet into FIG Hardware  
 Published file format  
 Compatible with LUTher and Kodak file formats

**DIMENSIONS (FIG)**

44mm (H) x 205mm (W) x 325mm (L)  
 Rack mounting with RM1 option (2 units in 1RU)

**WEIGHT**

2.5kg (without power supply)

**POWER**

FIG comes with an external 100-240V power supply  
 Optional redundant power supply (RPSU)  
 Power consumption: less than 20W

All specifications of this brochure are subject to change without notice. They are given for information only

ORDERING INFORMATION

- FIG** Universal HD-SD SDI to HD-SD SDI OS free computer  
External 12V Power Supply
- LUT409** Single channel RGB Color legalizer and 1D LUT
- LUT449** same as LUT409 with 4x4 (YUVK or RGBK) I/O
- LUT509** Single channel RGB Color legalizer and 3D LUT
- LUT549** same as LUT509 with 4x4 (YUVK or RGBK) I/O
- LUT559** Single channel RGB/YUV Color Corrector and Legalizer plus 1D-3D LUT
- LUT599** same as LUT559 with 4x4 (YUVK or RGBK) I/O
- RC-CO** Remote control for Color Correction
- RM1** Rackmounting mechanics for 1 or 2 FIG modules
- RPSU** Redundant & Hot Swap external 12V Power Supply

Doc 2008-0--LUT-V6.00

# 1D-3D LUT CONTROL

Software solutions developed on FIG hardware platform

**Legalizer and 1D LUT**

LUT409  
 LUT449 (in 4x4)

**Legalizer and 3D LUT**

LUT509  
 LUT549 (4x4 I/O)

**Full Color Corrector with 1D LUT and 3D LUT**

LUT559  
 LUT599 (in 4x4)

**Additional Control unit**

RC-CO



# FIG

OS-free 'computer' designed for dual link HD, HD, SDI  
 Second to none

FIG has everything to suit your needs  
 Dual HD/SD-SDI Inputs  
 HD/SD-SDI Outputs  
 Redundant Power Supply  
 Ethernet connection  
 GPI I/O  
 Field upgradable firmware from Compact Flash

RC CO

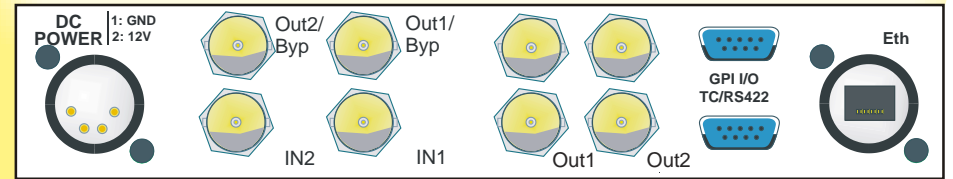
5 rue de la verrerie 38120 Le Fontanil (France)  
 Tel : +33 476 71 0528 - sales@vt3.tv

[www.vt3.tv](http://www.vt3.tv)

VT3, 5 rue de la verrerie 38120 Le Fontanil (F)  
 Tel: +33 476 71 05 28 - e-mail sales@vt3.tv

# 1D-3D LUT CONTROL

# FIG



## LUTxx9 Functionalities

### General Specs (common to all models)

- Serial SD/HD-SDI Inputs
- Serial SD/HD-SDI Outputs
- Process is transparent to embedded audio and VBI
- 2 GPI Out, 4 GPI In all potential free
- User selectable GPI controls
- 100baseT Ethernet network connector
- 1RU height, half 19" width (2 units in 1RU)

### 3D LUT

- Accepts 3D LUT files at Kodak, Panavision and Luther (GVG) formats
- Each LUT has 17 nodes per color with 12 bits accuracy
- 3D LUT files are loadable locally from compact flash or remotely over Ethernet using TOMATO

### 1D LUT

- RGB Color corrector (black, gain)
- 1D LUT for gamma or bezier curve function
- Complete YUV Proc Amp plus YUV Clipping

### Miscellaneous (common to all models)

- True False Color Legalizer with adjustable thresholds (RGB Clipper)
- H and V crop with linear edges
- Controls from front panel, RC CO or TOMATO (PC software control)

	LUT 409	LUT 449	LUT 509	LUT 549	LUT 559	LUT 599
Legalizer	X	X	X	X	X	X
4x4 Dual Link		X		X		X
1D LUT	X	X			X	X
3D LUT			X	X	X	X

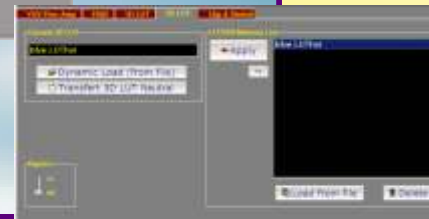
## RC-CO Functionalities

- 100 baseT Ethernet network
- Internal 10/100 Ethernet switch with 4 external ports
- Graphics LCD display
- Camera style mechanics
- Direct access to all functions of Color Correctors
- Direct access to all devices on network



Remote Operation with TOMATO

TOMATO is free of charge



# VT3